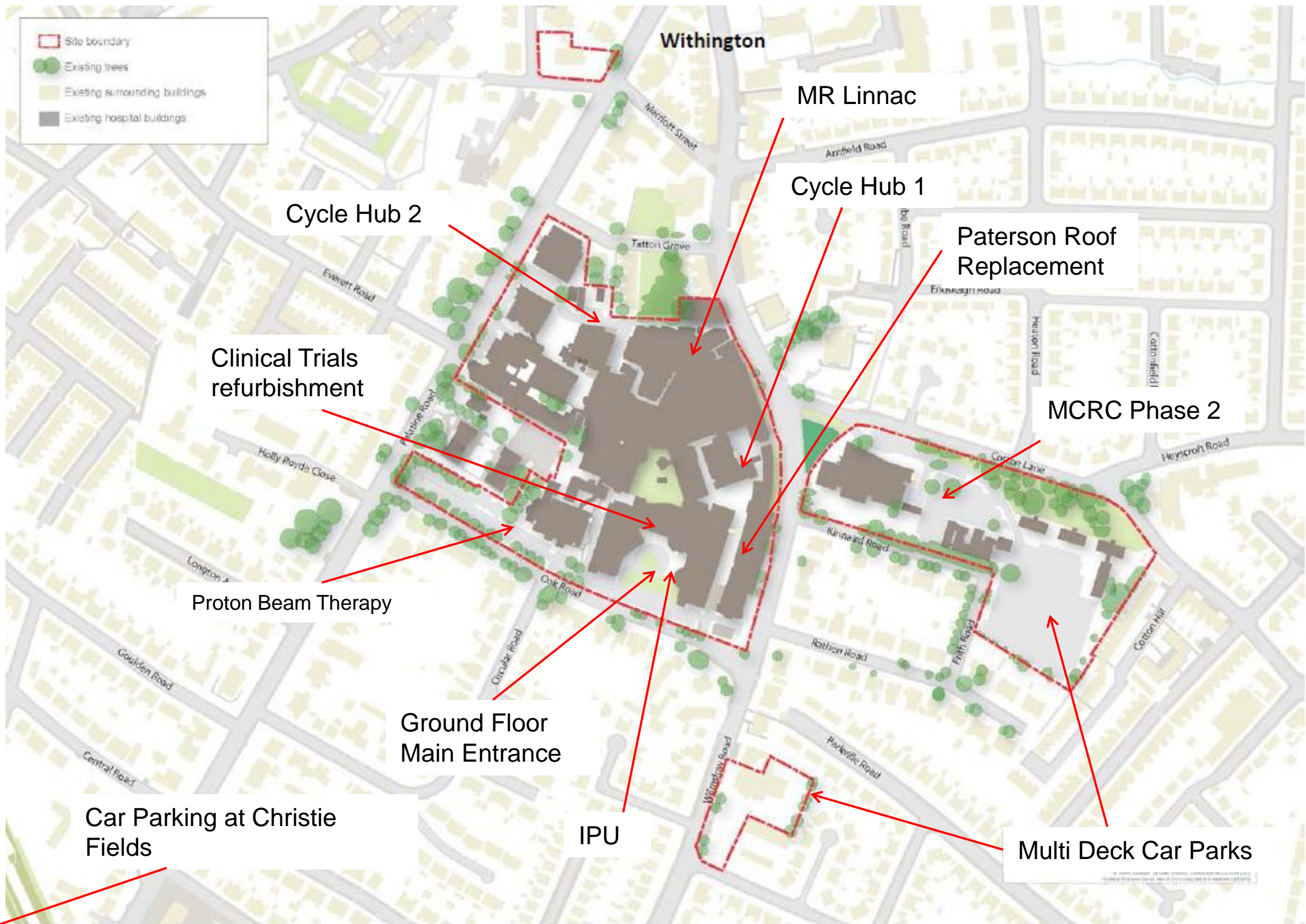


# UPDATE ON CAPITAL PROJECTS



11<sup>th</sup> October 2016





# Projects in progress

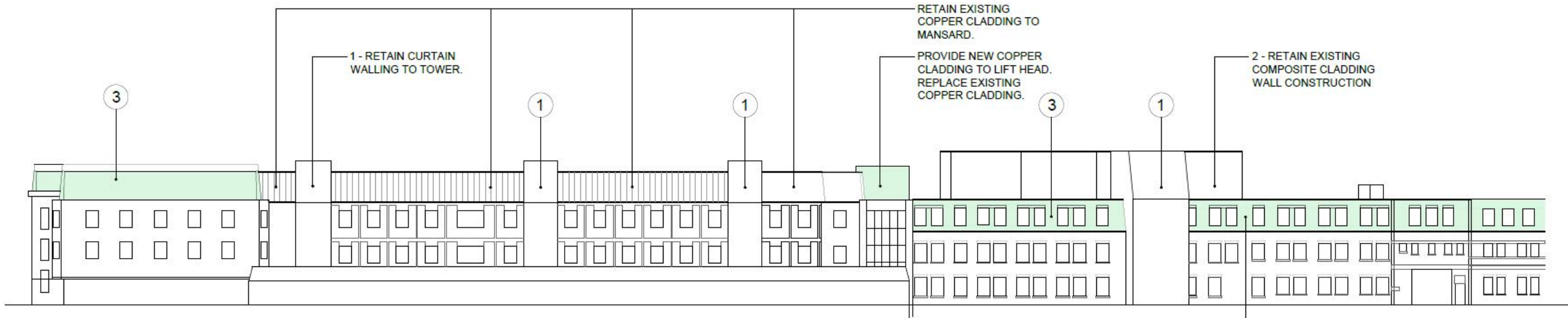


# Proton Beam Therapy

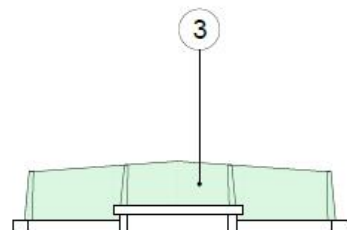
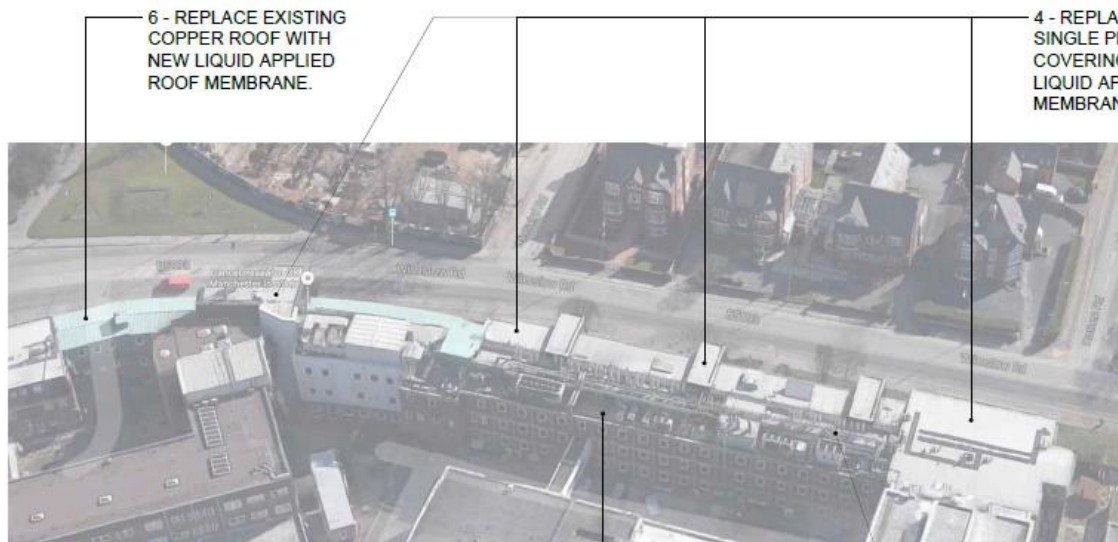




# Paterson Roof Replacement



EAST-FACING ELEVATION (1:200)



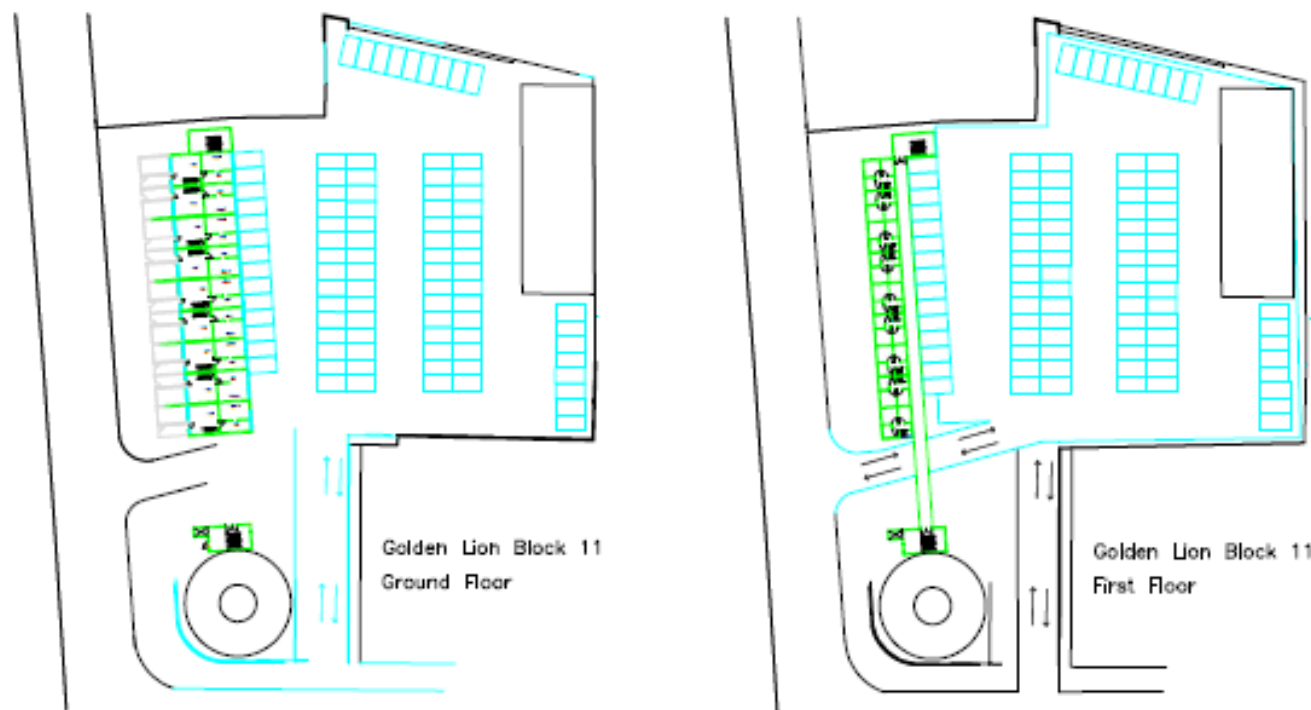
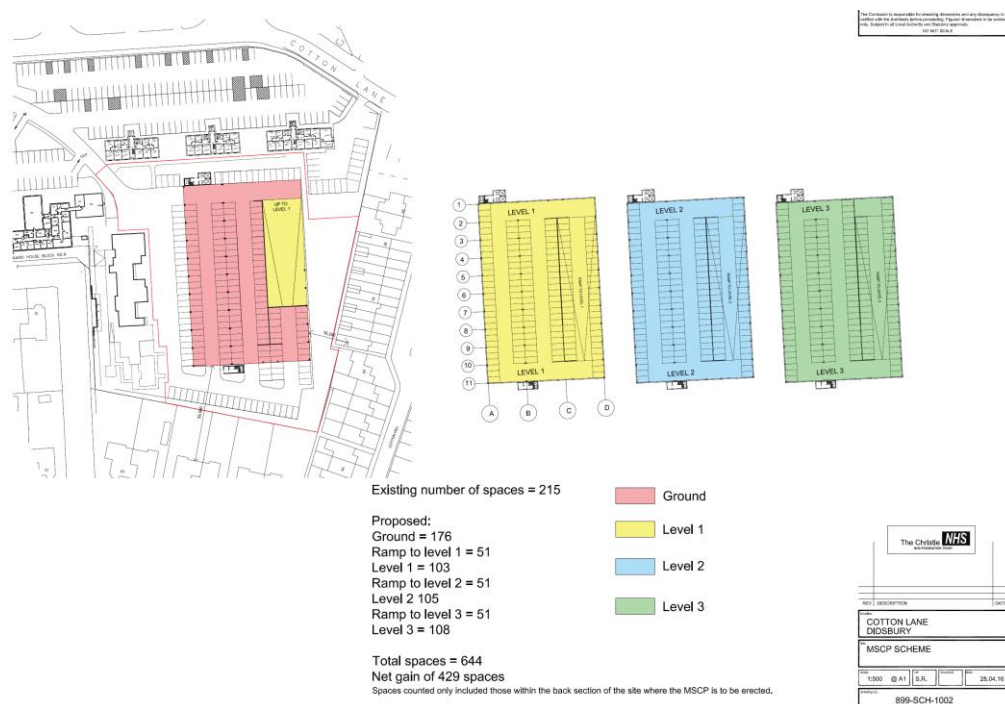
7 - OVERLAY EXISTING MASTIC ASPHALT FLAT ROOF WITH NEW LIQUID APPLIED ROOF MEMBRANE.

5 - REPLACE EXISTING COPPER CLADDING TO VERTICAL FACE OF PLANT ROOM WITH NEW LIQUID APPLIED ROOF MEMBRANE.

4 4 4 4 4 6 4 6



# Tiered Parking



- Good review at Neighbourhood Forum
- Took advice to slow down programme
- Had proposals from neighbour supported by members to consider
- Commencing design development with proposals for public consultation at the end of the year





# MCRC Phase 2



1. Manchester Cancer Research Centre
2. The Paterson Institute for Cancer Research
3. The Christie
4. Maggie's Centre
5. 3 Storey Medical Staff Residences
6. Multi-storey car park
7. Re-routed internal site access road

- Key
- MCCBS Building Location
  - Extended Green Swathe
  - High Profile MCRC Front Door
  - Vehicular Access
  - MCRC / MCCBS Delivery Access
  - Pedestrian Access

This represents a development of The Christie Development Framework. Refer to appendix F for preliminary proposed site logistics plan indicating the interface between MCCBS and the multi-storey car park works.

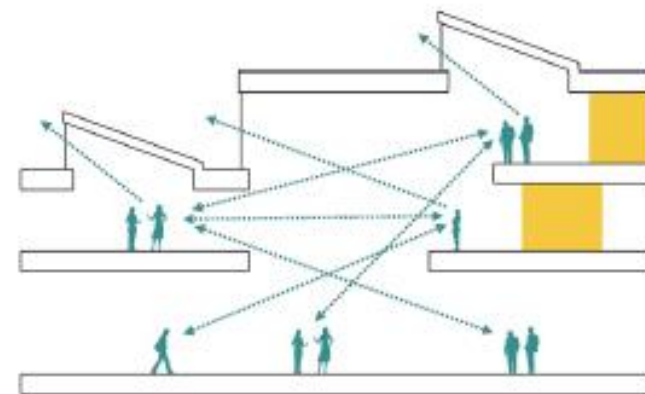
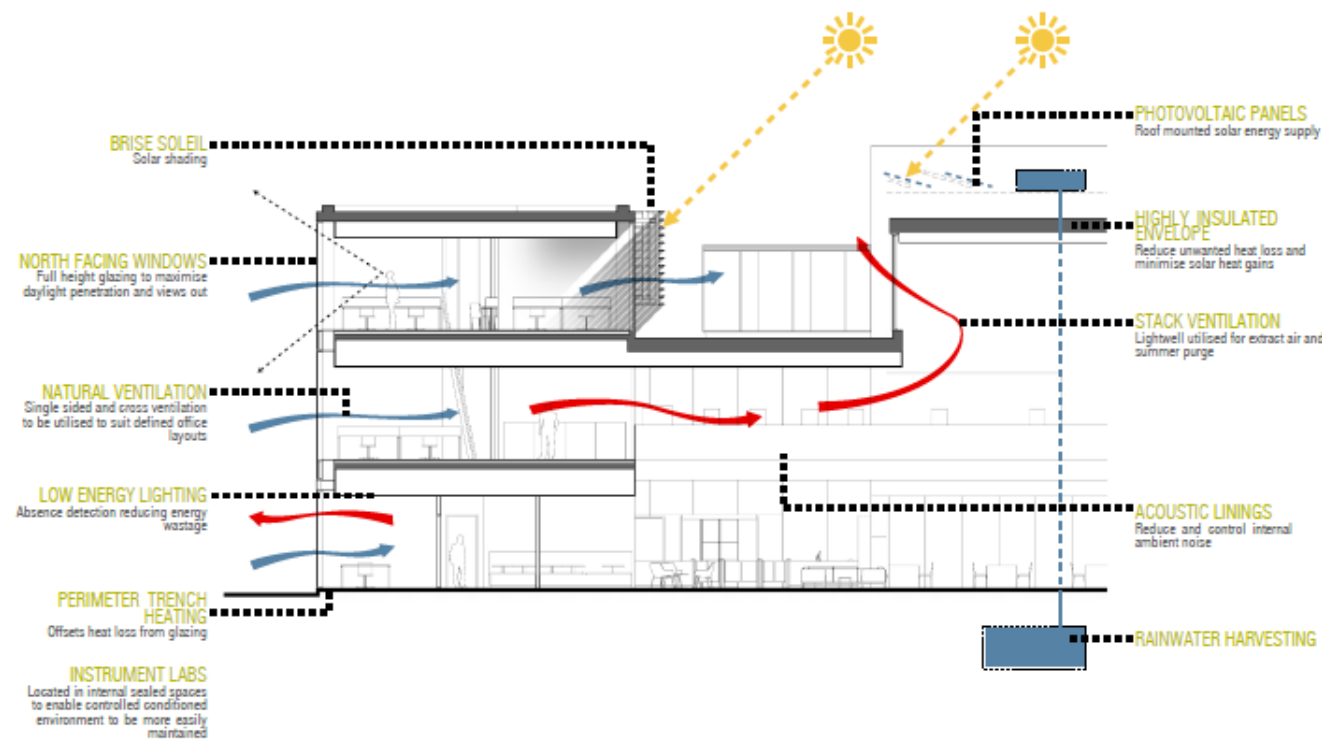


# MCRC Phase 2



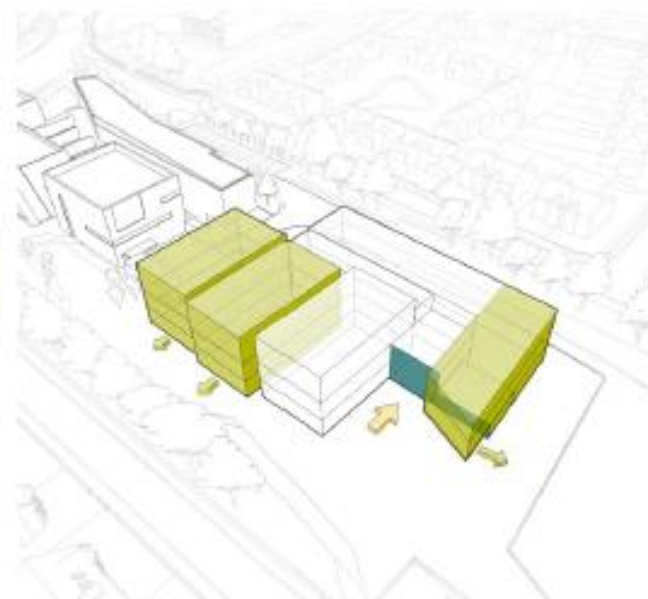
# MCRC Phase 2





### COLLABORATION SPACE

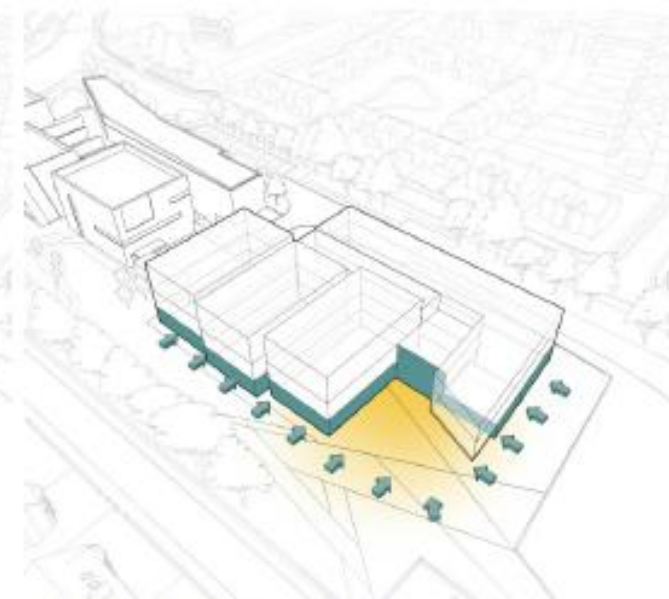
Transparent and inspiring space at the centre of the building allows visual connection between the scientists promoting a sense of team spirit and a collaborative environment. Creates a collective gathering space for the entire building. Re-configurable furnishings provide a large format event space or group presentation area.



### ENTRANCE

The alignment of the south eastern office wing opens out and frames the building entrance, echoing the appearance of MCRC off Withington Green.

The ground floor elevations are pulled in towards the centre of the building drawing staff and visitors towards the main entrance. The recessed ground floor elevation enhances views around the building and permeability of the site between MCCBS and the Maggie's Centre.



### PUBLIC REALM AND 'SHOP FRONT'

The extended landscaped 'Green swathe' creates a campus feel and a new public space to the front of the building.

The ground floor will be opened up with glazing creating an attractive frontage to the public spaces with animated views into the laboratory and office areas.



# MCRC Phase 2



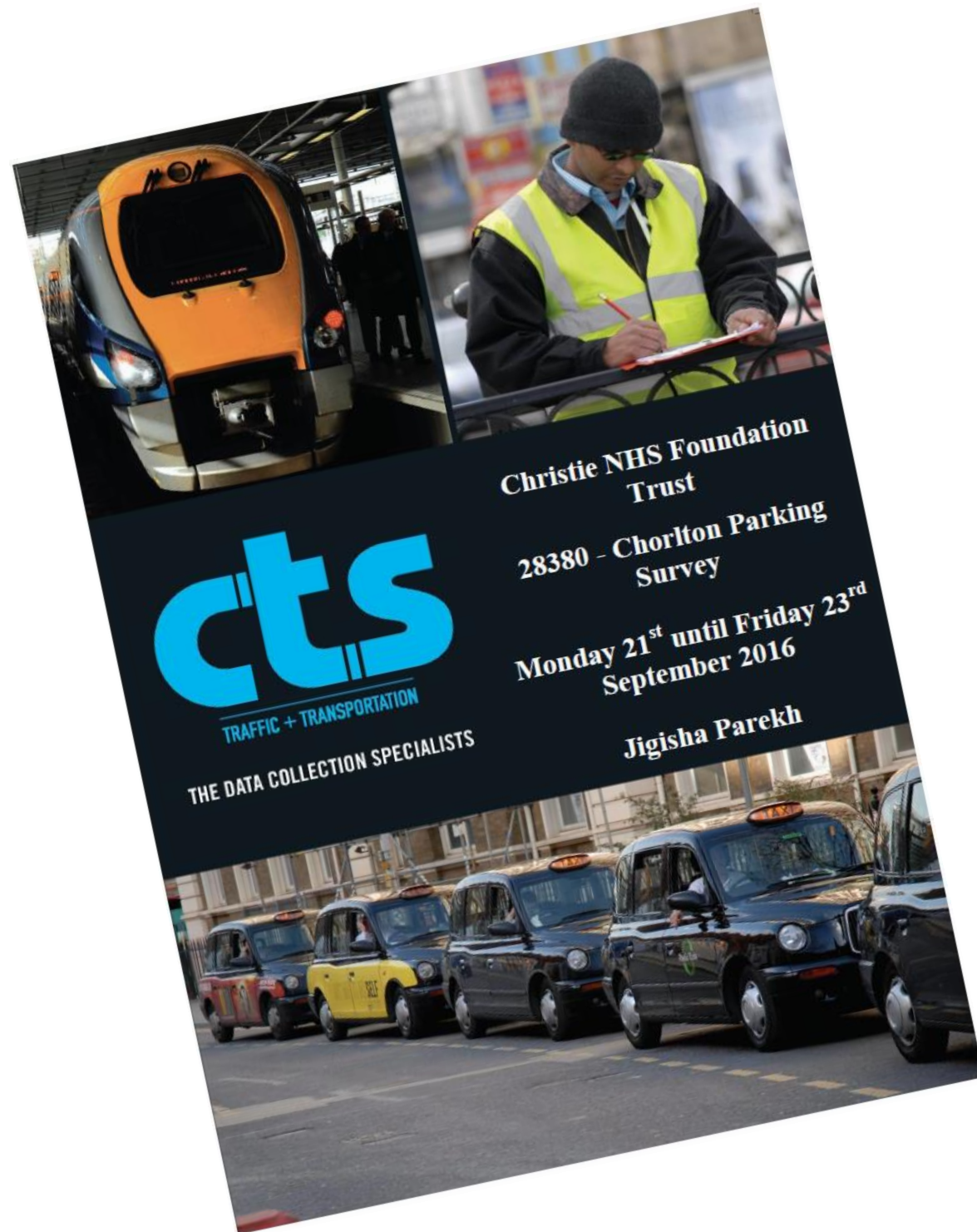


- Now open
- No complaints from neighbours
- 25% usage at present
- Undertaking a large marketing push to the end of the year
- Increasing hours and frequency of busses for a trial period



# Christie Fields Park & Ride





- Second traffic survey now complete in September:

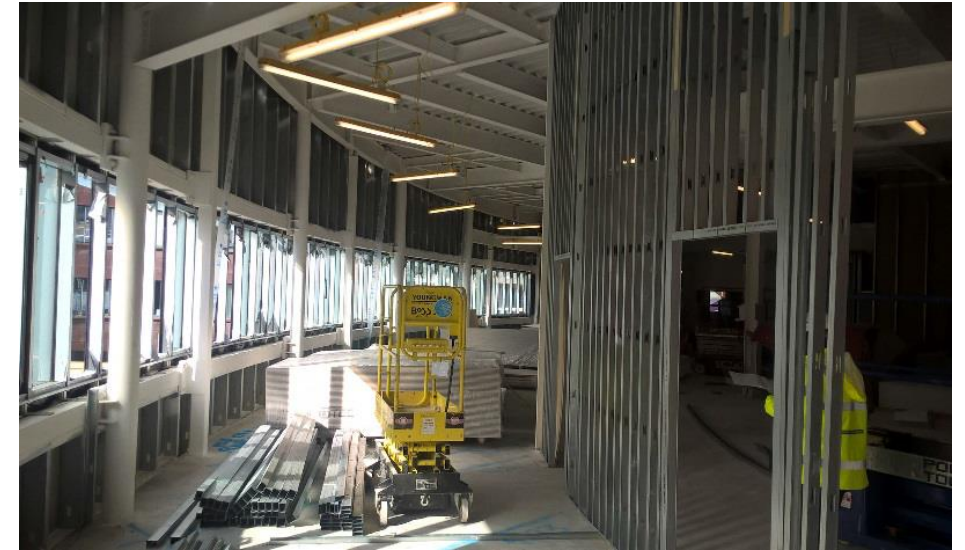
“We recommend continued monitoring is necessary but that if this remains the level of change that it should not require further action.
- No complaints from neighbours
- 35% usage at present
- Undertaking a large marketing push to the end of the year
- Increasing hours and frequency of busses for a trial period



# Christie Fields Park & Ride



# Integrated Procedures Project



- Building now fully covered from the weather
- Fit-out is progressing well
- Installed all the plant and equipment on the roof
- Due to open in April 2017





- Expansion of the Clinical Trials Facility within extended new IPU building
- Detailed design in progress
- Final agreement in December with Interserve Construction Ltd
- Start on site early February 2017



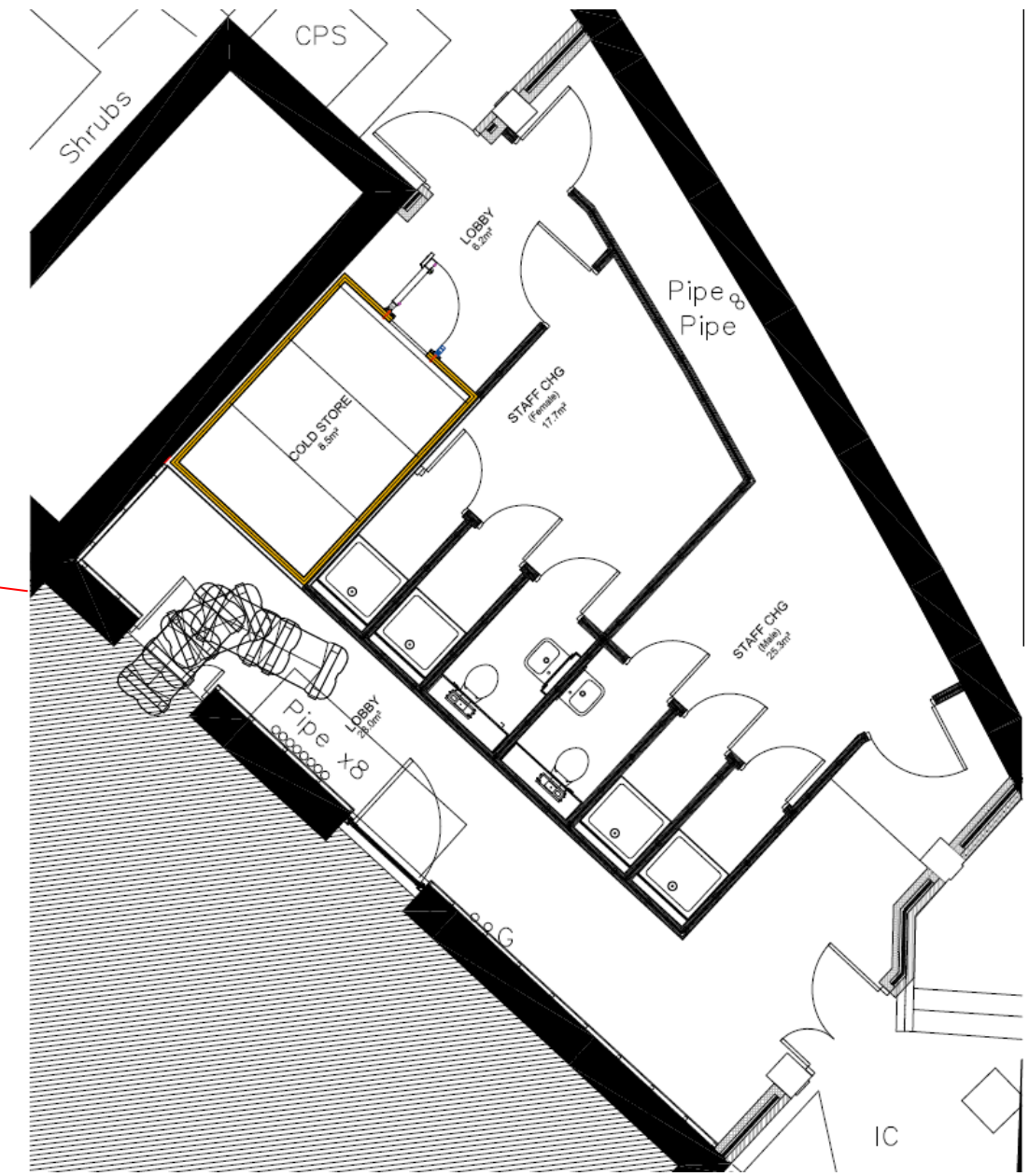
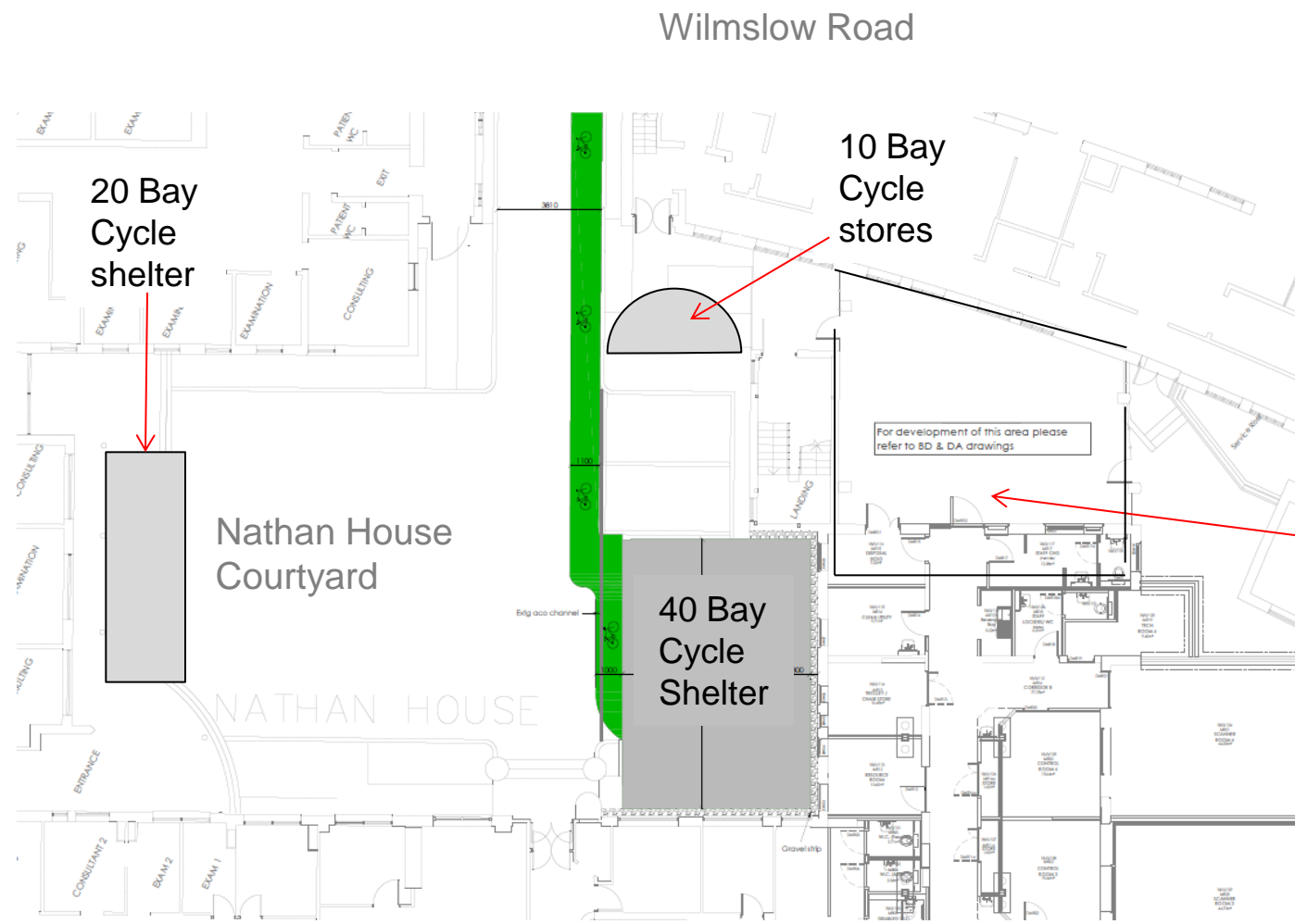
# Clinical Trials Refurbishment







# Cycle Hub 1 complete in November 2016

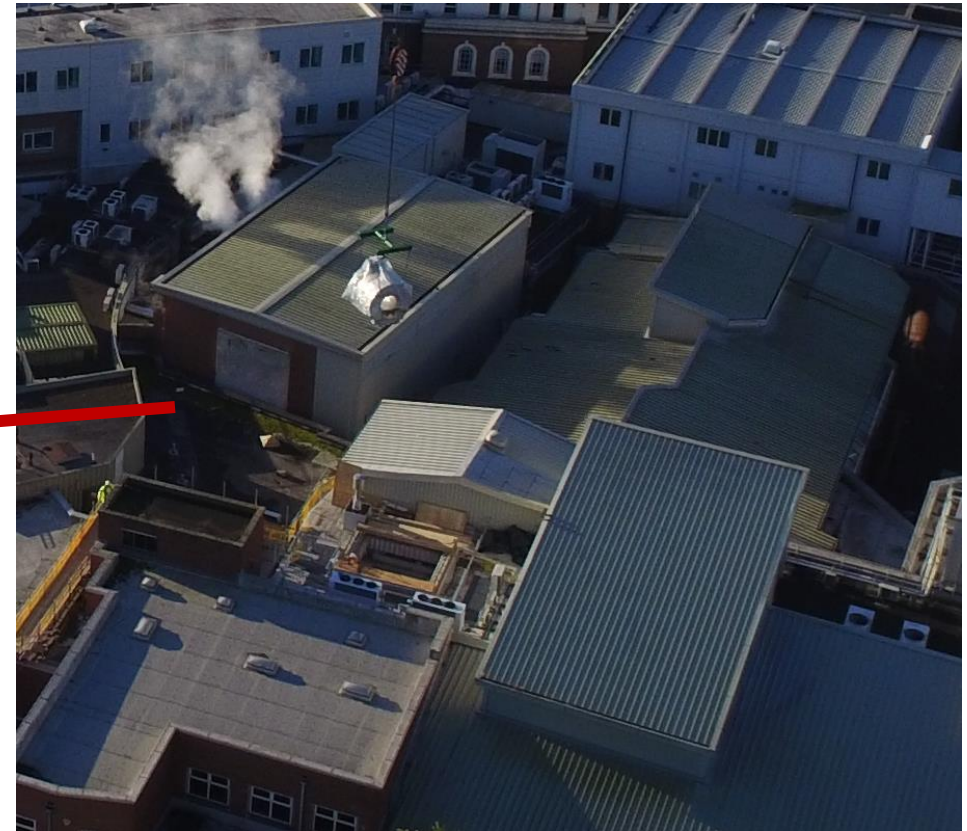
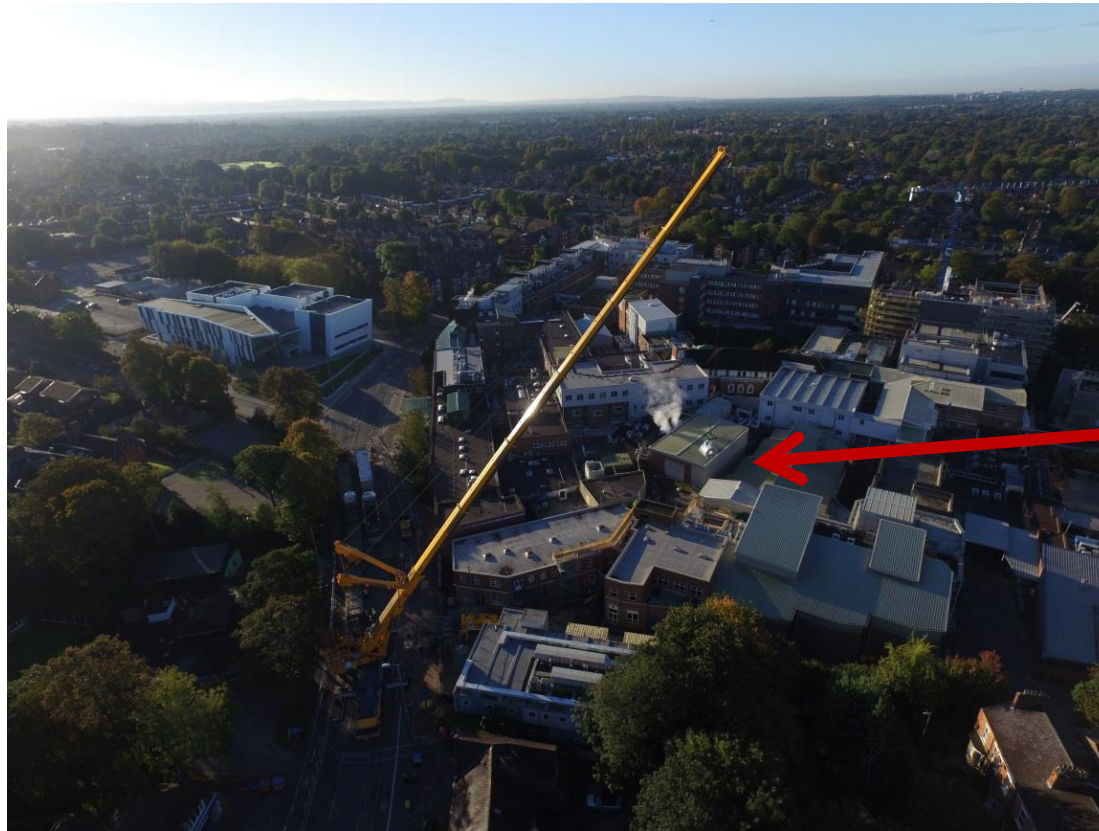


Shower & Changing facilities



# Cycle Facilities



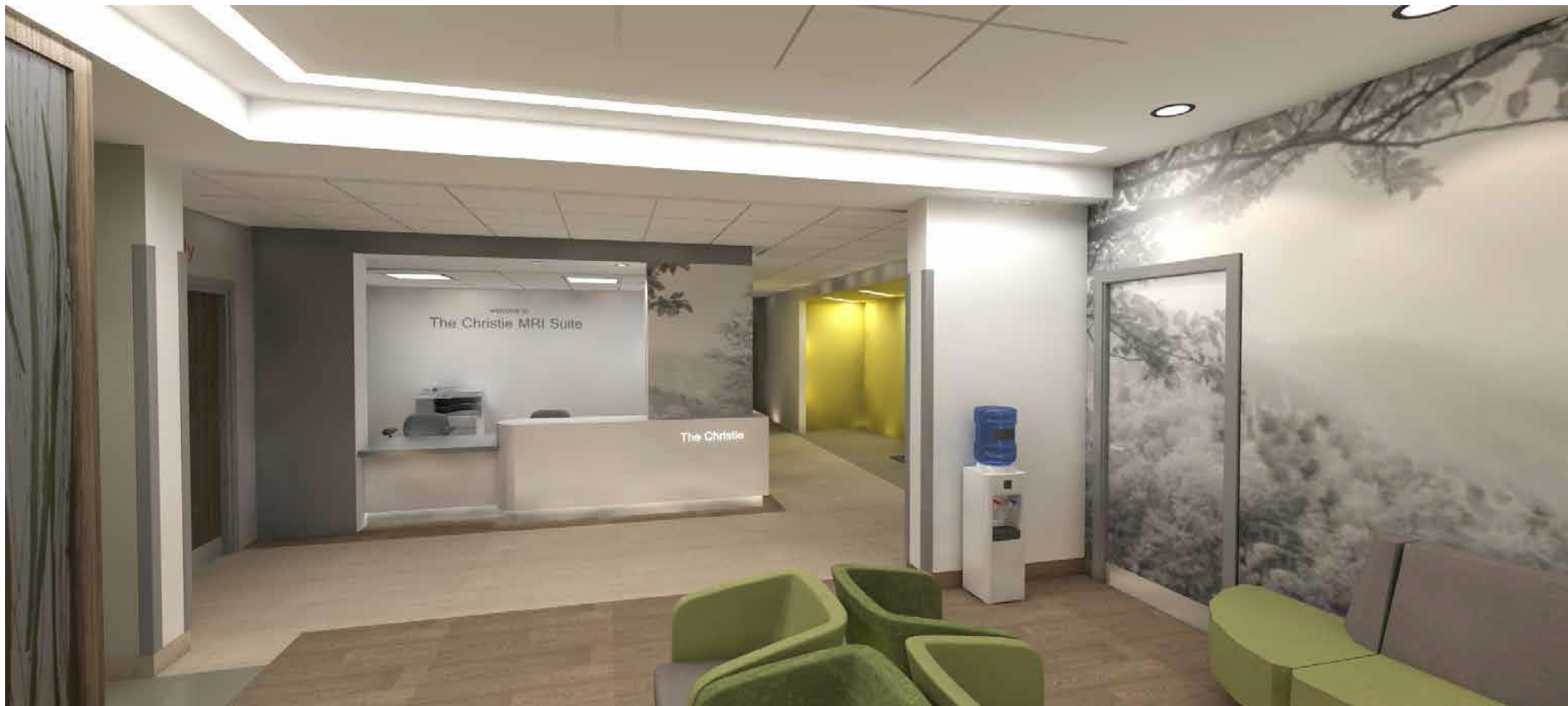


- Thank you to our neighbours over the last weekend whilst we delivered the new “state of the art” MR Linear Accelerator
- A 6 ton unit lifted over 65m horizontally off Wilmslow Road
- Will bring the latest radiotherapy treatment to The Christie
- Will be in use in 2017



# MR Linear Accelerator





# Newly completed MR Suite and Ward 4 Annex

