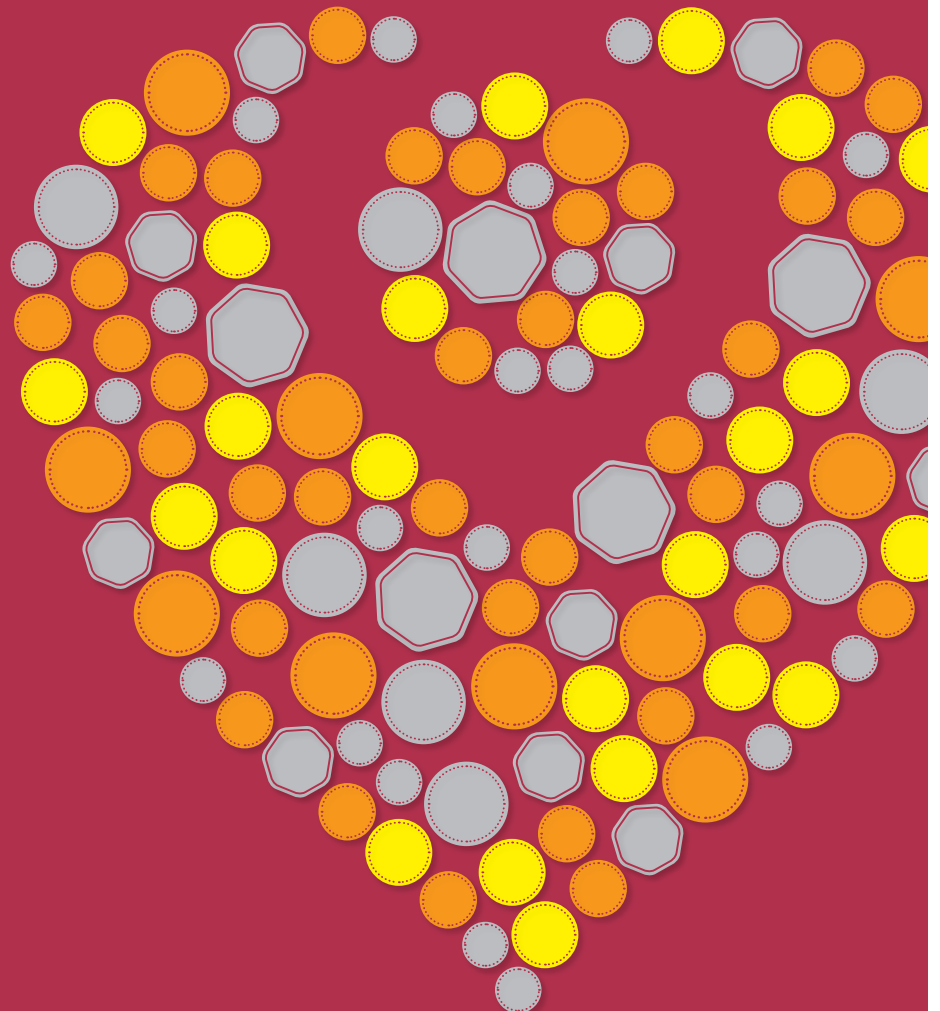




The Christie  
Charitable Fund

# With a little help from our friends

How your donations are helping  
our patients



# Your money helped over 40,000 patients this year, and that's just for starters...

**Welcome to our charity impact report for 2010/11. Or should I say, your impact report. After all, it's your kindness, your generosity, and your donations that have made it all possible.**

In a year filled with achievements, our biggest news was the opening of our brand new patient treatment centre, on time and on budget. Thanks to your support The Christie now has the world's largest clinical trials unit, not to mention even bigger and better chemotherapy services: the difference these state of the art facilities will make to our patients' lives can never be underestimated.

And neither can your support. Without your generosity groundbreaking projects like these would never have been possible. The fact you achieved so much within such a tough economic climate is even more commendable.

Whilst I'm sure there are many of you who now know The Christie well, the sheer scale and diversity of our work often comes as a surprise to many people. So in this report we have featured a whole variety of projects that just would not have been possible without your charity funding. Reading the next few pages, I'm sure you'll feel as proud as I do when you discover the tremendous difference you have helped make in all kinds of exciting and surprising ways.

So, whether you fundraise in the community, run marathons, volunteer, donate to our appeals or have a monthly direct debit – whatever your contribution, you are part of an amazing team. A team that has made, and are continuing to make a spectacularly positive impact on the lives of patients, as well as their families, both here at The Christie and across the world.

Finally, we simply couldn't do this work without you. So on behalf of myself and the rest of The Christie, thank you.



Rt Hon Lord Keith Bradley  
Chairman of the Charitable Funds committee

# It's good news!

**Thanks to your astonishing contributions we achieved £12.6 million in charitable donations this year. Which means that, despite some tough times, we not only managed to realise our fundraising target, but some long-held ambitions and goals too.**

From new facilities to new treatments, every penny you gave will have gone towards worthwhile projects here at The Christie.

But to give you an idea of the sheer size and scale of your contribution, we've picked out just a few of the headlining stories from 2010/11.

#### **Cancer information centre celebrates 10 years of success**

Margaret Calvert tells us how, after 10 successful years, your money is keeping our vital cancer information centre up to date. (page 6)

#### **Research news**

Funding research into rare and uncommon cancers has always been a priority for our charity. Dr Nick Slevin tells us about projects designed to find new treatments for patients, not just at The Christie, but right across the country. (page 8)

#### **Updates to our radiopharmacy**

Professor Tim Illidge gives an update from our charity funded radiopharmacy and reports on some results from research that your donations have made possible. (page 10)

#### **All new chemotherapy suite**

Chemotherapy service manager Jackie Wrench describes just how the new chemotherapy suite is changing the way patients receive treatment for the better. (page 12)

#### **World's largest early clinical trials unit**

Lead research nurse Helen Ferns explains how having the world's largest early phase clinical trials unit is already making a difference to patients at The Christie. (page 14)

*Alice Clarkson, aged 17, was first diagnosed with leukaemia in 2009.*



# We're on a mission

**Our information centre has been providing patients with all the support they need for the last 10 years. Your donations have helped update and expand its facilities so we can increase the services we provide to patients and their families over the coming years.**

Funded entirely by our charity, the centre has become a haven of support and reassurance not just for patients, but also their families and increasingly the wider community.

“As well as people coming into the centre,” says Margaret Calvert, information nurse specialist at the centre, “We also get frequent calls and emails from patients, their friends and relatives and other cancer professionals from across Britain and around the world who also want advice or help. We take pride in being the initial ‘voice’ of The Christie.”

The information centre is the first port of call for up to date information, practical advice and support. Your money helped it significantly in September last year – moving it to its very own purpose built site within the hospital. With wider doors for wheelchair users, as well as its very own counselling suite, the new-look centre is already making an impact with patients.

“With the new design, all that I had hoped for before moving to the new centre has proven possible. The centre is stunning and most importantly easily visible to passing patients and their friends and family who may need our help. We're so pleased with our new centre and that we're now able to offer this truly vital service to so many more people. Thank you.”

*Margaret Calvert is our information nurse specialist in the information centre*

Beverley Henderson, whose husband is currently a Christie patient is one of the centre's frequent visitors, “I like the new centre much better; it's in a much better location. Now Margaret can spot me when I walk past and every time I do she stops to ask me how I am and if I need any help or information, which really means a lot to me. I've come to rely on Margaret as sometimes after we've spoken to the doctor, I realise I've got lots of questions that I forgot to ask or there are some things I didn't really understand, but I know I can just go and speak to Margaret and that she'll have most of the answers for me or will help me to shape a question for the staff treating my husband.”

Suffice to say, the number of enquiries at the centre doubled to nearly 8,000 visits in just six months, bringing invaluable support to more of our patients than ever before. Mission accomplished.



# Exploring every possibility

**We never give up here at The Christie. Which is why we go to extraordinary lengths for every single one of our patients, day in, day out. Thanks to your generosity, we're taking our research to extraordinary lengths too – consistently and persistently leading the way in some of the rarest forms of cancer.**

Dr Nick Slevin is a specialist in rare head and neck cancers here at The Christie. As Nick explains, "In the cancer research community, rare cancers are called 'Cinderella cancers' because they don't get as much funding or political support. But there are over 500 head and neck patients treated at The Christie every year, so it's important that we can invest in research to help find more effective treatments for them."

In 2010, your donations allowed Nick and his team to spend half a million pounds to fund 14 separate clinical trials designed to find better treatments exclusively for head and neck cancers. And guess what? The benefits of these are already being felt.

Take Lynne Maxfield. After being diagnosed with an extremely rare and slow growing form of cancer in 1999, she was initially treated with surgery and radiotherapy. However, in 2003, Lynne was told her cancer had spread and no standard treatment would work for her. So in 2005, she accepted Nick's offer of a place on a clinical trial. Frustratingly, Lynne still showed no sign of improvement.

Nevertheless, in 2010 Lynne took part in a brand new trial to test the effectiveness of a drug used primarily for kidney cancer. And this time round there was good news – the trial treatment was working.

"Doctor Slevin never gave up on me and I'm so grateful," says Lynne. "This is the first time in nine years that I've had good news. I'm so thrilled this has happened. All that uncertainty and the side effects of the treatments like losing my hair. Today it doesn't matter, because today I feel fantastic!"

And without your donations, none of this would ever have been possible.



*Lynne Maxfield and Dr Nick Slevin*

# A ray of hope

**Whether it's groundbreaking treatments, medicines, services or support, your money helps make all of these things more accessible for our patients. So we were thrilled this year to be able to update and continue the work on our groundbreaking radiopharmacy project – or the magic bullet – as it is sometimes called.**

Set up in 2008 and funded almost entirely by charity donors, our radiopharmacy is now one of the world's leading centres for radioimmunotherapy. As a result, we're lucky enough to have attracted some of the world's leading researchers and clinicians to work alongside our project leader, Professor Tim Illidge. Together, Tim and his team work to create cutting-edge new treatments using the magic bullet. And thanks to your donations, The Christie radiopharmacy is now making a huge difference to our patients' lives.

For example, the big radiopharmacy trial this year was our Short Chemotherapy Radioimmunotherapy In Follicular Lymphoma Trial or SCHRIFT, as we prefer to call it. Involving patients from across 12 different cancer centres, SCHRIFT was the first radioimmunotherapy study ever to be conducted UK wide. In other words, it made the benefits of the magic bullet available to more UK patients than ever before.

The SCHRIFT study looked at the drug Zevalin to see how well the drug worked alongside a short course of chemotherapy and whether or not patients experienced fewer side effects. Of the 52 patients who took part in the trial, 50% were recruited by The Christie and only two patients did not respond to the chemotherapy.

As Tim explains, "Studying the magic bullet's wider application across more disease groups is vital, but this important work is also helping to reduce the unwanted side effects of chemotherapy among many patients. What's more, relapsed patients now have a greater hope that these new and innovative treatments will become available to them after standard treatments have failed."

Without your continued support, state-of-the-art facilities like these simply wouldn't exist, not to mention the incredible life-saving hope they provide.

*Sue Savage who received magic bullet treatment, and Professor Tim Illidge*



# Are you sitting comfortably?

**When we built our state-of-the-art treatment centre, we set out to create the perfect environment for our patients. Taking into account every little thing our patients would ever need or want, we even consulted them on the décor, doing everything we could to make them as comfortable as possible.**

Take our chemotherapy facilities for example. Previously, chemotherapy took place in four separate areas of the hospital, which was frustrating for all of us. But thanks to your money, our outpatients are now able to visit one central location for their treatment, which means more convenient treatment, within a first-class environment. Not only that, but the new unit is set to increase our chemotherapy capacity from 30,000 treatments a year to 38,000 treatments a year with further increases planned for the future.

The new chemotherapy treatment centre has been split into two areas. One area contains specially designed treatment bays containing custom-made treatment chairs, specifically designed with patient comfort in mind. As patients generally have to sit for several hours whilst undergoing treatment, the new chairs are made with memory foam and recline fully.

As Jackie Wrench, the service manager in the new chemotherapy unit explains, "The new facilities are a huge hit with patients. People often comment on how comfortable the chairs are and what a pleasant environment it is. We've found that patients really like the fact that they can choose to either close the curtain

between the treatment bays for privacy, or pull it open. Often being able to have a chat with the person sitting next to you who might be going through the same or similar treatment to you can be really invaluable."

But that's not all. The second area contains beds for longer chemotherapy treatments. This means patients will still be able to go home at the end of the day, but if anyone unexpectedly needs an overnight bed, they can easily be transferred to one of our wards without too much disturbance.

Whilst we really try our hardest to think of everything at The Christie, we wouldn't be able to do half of it without you.

*Jackie Wrench is our service manager in the new chemotherapy unit*



# A second chance

**Our brand new clinical trials unit is now the largest early phase clinical trials unit in the world. Costing over £10.6 million pounds, the renewed hope it offers to our patients is frankly priceless.**

In November 2010, we finally opened our state-of-the-art clinical trials unit here at The Christie. In just a few months the clinical trials unit has doubled our capacity. Nearly two and a half thousand cancer patients have received treatment as part of a clinical trial in the last year.

The Christie offers phase 1 clinical trials to some patients who have stopped responding to standard treatment. A phase 1 clinical trial is the first time a new drug is given to humans, all of our patients are very closely monitored within our clinical trials unit. At The Christie around a third of our clinical trials work is phase 1, making us one of only a handful of centres throughout the UK that specialise in this kind of groundbreaking cancer research.

We're proud to say in total there are around 200 clinical trials going on at The Christie at any one time, with our expert staff treating around 100 clinical trials patients every week. The new centre, which also has its own state-of-the-art laboratory, now processes around 11,000 research samples every year.

But it isn't only our patients who are benefitting from the impact of the new centre. Helen Ferns, lead research nurse says, "The clinical research teams and laboratory staff are absolutely delighted with the new charity funded laboratory, and our work areas are massively improved. We're all especially excited about the difference it'll make to our biomarker research projects – a specialist research area where our scientists aim to find the right treatment for each of the 200 different types of cancer based on a patient's genetic makeup. "

Your continuing support for cancer research at The Christie has helped us strengthen our position as a world-leader. Thanks to you, more and more of the world's leading research is now taking place at The Christie, and more and more patients are getting access to new treatments.

*Our staff from the clinical trials unit*



# Looking into the future

**We don't need a crystal ball to plan for the future at The Christie. We just need to look at the incredible work we're already doing, and see how we can do more of it.**

Over the coming year, we've got some exciting plans we're already making progress with. So with your continued support, generosity and kindness, you can help us to make them happen and, more importantly, help even more of our patients look forward to a cancer-free life, whatever their future holds.

## Young oncology unit

Because we understand that different patients have different needs, we're planning improved cancer services and more research for teenagers and young adults, designed purely with their medical and social needs in mind. This is vital for young people coping with cancer.

## Manchester Cancer Research Centre

Together with The University of Manchester and Cancer Research UK we are planning to build an exciting new research building. Our hope is to bring the rapid development of world-class research to our doorstep.

## Research and patient care

Your money will continue to fund core services such as the running costs of the cancer information centre, our complementary therapy service, our wig service and a whole host of patient improvement programs. Meanwhile, we'll be funding vital ongoing research projects to develop groundbreaking treatments each and every year, which means our patients can be amongst the first in the world to access the very latest treatments.

# The pounds and the pence


**The chart below gives a simple overview of all our income and how it's spent.**

You'll probably notice that we spent more in 2010/11 than we raised. This is because we have funded some capital development projects such as the new patient treatment centre which we have raised money for in previous years.

As for where the money comes from, in 2010/11 **9,886** people either ran, walked, cycled or skydived for The Christie. **5,923** people gave by direct debit or standing order. **190** companies supported us. **194** people left us a gift in their will. **664** people organised a fundraising event in their community.








Overall **97,609** donations were made in 2010/11. Thank you.

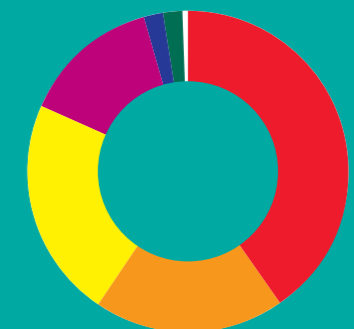
## Charity Income

Donations	7.017	
Legacies	5.455	
Investment income	0.107	
Other	0.014	
<b>Total Income</b>	<b>£12.593m</b>	



## Charity Resources Expended

New buildings, refurbishment etc	5.665	
Enhancing clinical care	2.677	
Patient and staff welfare	3.080	
Cost of generating funds	1.956	
Research	0.269	
New equipment	0.264	
Governance costs	0.075	
<b>Total Resources Expended</b>	<b>£13.986m</b>	



# A big thank you

**A special thank you to the following individuals, companies and tribute funds who have contributed over £4,000 from April 2010 to March 2011.**

## **Charitable trusts**

Alliance Family Foundation Limited  
Benson Black Memorial Charitable Trust  
The Booth Charities  
Brian Wilson Charitable Trust  
D'Oyly Carte Charitable Trust  
Dr Scholl Foundation  
Edward Holt Trust  
Great Northern Aid Trust  
Houghton Dunn Charitable Trust  
Irish Abroad Charitable Trust  
Isle of Man Anti-Cancer Association  
Kidani Memorial Trust  
Ken and Sylvia Hymas Charitable Trust  
Lord Barnby's Foundation  
Martin Family Charitable Trust  
Marjory Boddy Charitable Trust  
Peter Kershaw Trust  
Sale Mayoral Fund  
Santander UK Foundation  
Steve Landells Memorial Trust  
Steve Prescott Foundation  
Stoller Charitable Trust  
Tony Rampton Trust  
Von Hippel Lindau Contact Group  
Visions Trust  
Walk the Walk  
WO Street Charitable Foundation  
Zolfo Cooper Foundation

## **Corporate**

Aon  
Astra Zeneca  
Balfour Beatty Construction  
Northern Ltd  
R Banks & Son Ltd  
Barclays Bank PLC  
N Brown Group plc

British Car Auctions Limited  
British Gas Communications  
Bromley Hyde and Robinson Solicitors  
GGM Properties Ltd  
Cheshire Scaffolds (UK) Ltd  
Co-operative Financial Services Ltd  
Cobra UK & Ireland Insurance Services Ltd  
Frankie & Benny's  
Frederic Robinson Ltd  
Gascoigne Halman  
I & G Cohen Ltd  
Interserve Project Services Ltd  
Joseph Holt Ltd  
Housing Units Ltd  
Laterooms.com  
McBride International  
Mackereth Engineering Ltd  
Manchester United  
Manchester Evening News Arena  
Momote  
Morson International  
The National Asbestos Helpline  
Pannone LLP  
Quorum Estates Limited  
J Rothwell & Son Ltd  
The Sat Nav Warehouse Ltd  
Sceptre Leisure  
Seddon Group Limited  
Senior Aerospace BWT  
Soreen Ltd  
Telefónica O2 UK Ltd  
Thomson Airways  
Timpsons Ltd  
Total Excellence Centre  
Umbro International Ltd  
TD Waterhouse  
J D Williams

## **Community fundraising & private donations**

Alison's Rainbow  
Nigel Alliance  
Altrincham and Sale Fundraising Group  
Mel and Chris Angold and family  
Zafar Anwar  
John Atkinson  
Bambers Bikers  
Elaine Birchall  
Phil Buckley  
Chad's Challenge  
Louise Chadwick and Matthew Kenny  
Charlotte's Shining Star  
Christie Appeal Macclesfield  
Christie Appeal Tameside Section  
Christie Complementary Therapy Team  
Christie Friends  
The Christie Grafters  
Andrea Cairns  
Alison Clarkson  
David Coleiro and Michael White  
Mo and Bob Cooper  
Andrew Crawford  
Paul Cronin  
The P J Davies Charitable Trust in memory of Renee Davies  
John Dixon  
Helen Durkin and family  
Sally Dynevor  
Trevor Edmondson  
Robert Edwards  
Elise for Life  
Factor 50  
John and Val Fisher  
Fleetwood Cancer Research Committee  
Sharon Fraser  
The Friends of Jacky Franks  
Racheline Garston

Arron Gould and the Gould Family  
Greater Manchester Police Federation  
Greater Manchester Police (Longsight)  
Jennifer Greenwood  
Mark and Michelle Halsey  
Andrew Herd  
Allan and Helen Hill  
Stephen Hill  
Steve Hill  
David Hilton  
Krystina Hoyle  
Marie Irving-Murphy  
Dr Joe Jaffe Hospital Support Charity  
Steven Jamison  
Alan Johnston  
Michelle Keegan  
Lisa Kelly  
Terence Kelly  
Richard Kershaw  
Stella Kirkbride  
Michael Leahy  
Stephen Levy  
Living with Molly - Sam Vickerman and friends  
Jo McCarthy  
Clare McDonnell  
McGoff & Byrne  
Ian McGrath  
Rosamond Mahon  
Lynn Mallinson and family  
Manchester Home Team  
Manchester Show Choir  
Peter Morgan  
Nantwich Support Group  
David Pochin  
Peter Neumark  
Oldham Rochdale & Middleton Fundraising Group  
Jim and Caroline O'Neill  
Myrna Pearson  
Pelican Golf Society  
The Portfolio Guide Appeal  
Victoria Potts  
Gareth Preston  
Robert Rigby  
David Riley  
Barbara Robinson Memorial Fund  
Romiley Golf Club  
Kathy Rosser  
Rotary Club of Lymm  
St Bedes College  
Saddleworth Ladies Fundraising Committee  
Sadie's Pot of Gold  
Salisbury Young Farmers' Club  
Jessica Sawyer  
John and Joyce Shacklock - Daniel's Light  
Caroline Shaw  
Margaret Simpson  
Kevin Smith

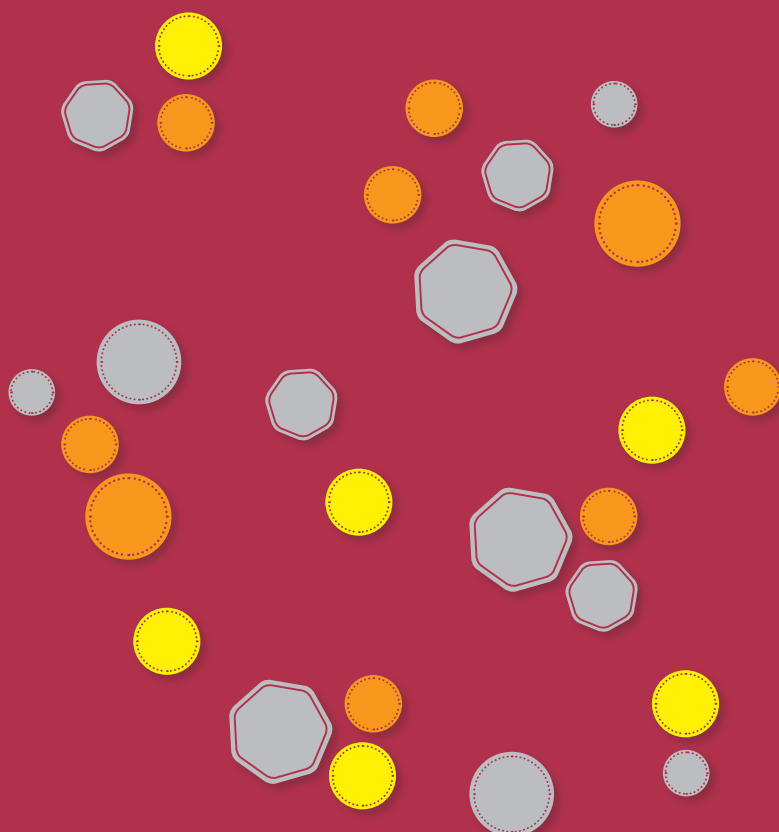
Laurence Smith  
Philip Smith and family  
Songs for Christie's  
Ilse and Bob Splaine  
B Standing  
Beryl Statham and the Three Rivers Park Fundraisers  
Stockport Campaigners for Christies  
Jim Swainson  
Tarpoley Fundraising Group  
Richard Taylor  
Tender Loving Care Ladies Committee  
Diane Thompson  
Andrew Valentine  
Hilda Walster  
Liam Walsh  
Becky Want  
Steven Warburton  
John Wardle  
Wellington School  
Simon Whomsley  
Wibbersley & Thorne Society  
Wigan Calendar Girls  
Wigan Leigh & Chorley Fundraisers  
Rachael Williams  
Wilmslow Fundraisers for Christies  
Chris Wood  
H Woodcock  
Women's Trust Fund for Christies - Dukinfield  
Women's Trust Fund for Christies - Oldham & District  
Women's Trust Fund for Christies - Trafford  
Deborah Worthington  
Chris Young

## **Tribute Funds**

The Nicholas Hobin Tribute Fund  
The Peter Kelly Tribute Fund  
The Marlene Gould Tribute Fund  
The Alison Cooney Tribute Fund  
The Gillian Jamison Tribute Fund  
The Matthew Newall Tribute Fund  
The Michelle Bowen Tribute Fund  
The Sadie Musgrove Tribute Fund  
The Philip Young Tribute Fund  
The Renee Davies Tribute Fund  
The Alex Hall Tribute Fund  
The Chadwick Mulholland Tribute Fund  
The Steve Landells Tribute Fund  
The Nicholas Hobin Tribute Fund  
The Martin Pears Tribute Fund  
The Jean Martin Tribute Fund  
The Jacqueline Franks Tribute Fund  
The Daniel Shacklock Tribute Fund  
The Dean Thompson Tribute Fund  
The Kenneth Walster Tribute Fund  
The Maurice Phillips Tribute Fund  
The Gregory O'Brien Tribute Fund  
The George Riley Tribute Fund

The Maureen Devlin Tribute Fund  
The Michael Pochin Tribute Fund  
The Michael Pearson Tribute Fund  
The Elke Machell Tribute Fund  
The Rick Mallinson Tribute Fund  
The Shulian Zhang Tribute Fund  
The Gareth Greenwood Tribute Fund  
The Christopher Pitt Tribute Fund  
The Russell Oldfield Tribute Fund  
The Colin Prentice Tribute Fund  
The Enid Atkinson Tribute Fund  
The Barbara Irving Tribute Fund  
The Christine Hoyle Tribute Fund  
The James Durkin Tribute Fund  
The Sarah Percy Tribute Fund  
The Daniel Deus Tribute Fund  
The Janet Rigby Tribute Fund  
The Alan Williams Tribute Fund  
The Francesca Smithers Tribute Fund  
The Paul Wright Tribute Fund

We have endeavored to include all those who raised or donated £4,000 or more in the financial year 2010/11, but however much you contributed, we are truly grateful to everyone who gave time, effort and money. Thank you!



**The Christie charity**  
Wilmslow Road  
Manchester  
M20 4BX

[www.christies.org](http://www.christies.org)  
[charity@christies.org](mailto:charity@christies.org)  
Tel 0161 446 3988  
Fax 0161 446 3991

Registered charity no. 1049751