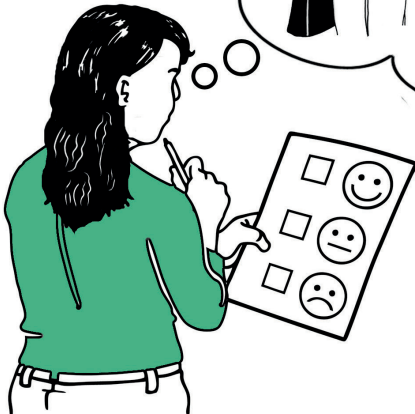




Have your say

The Christie comment form



easy read

At The Christie we are always trying to find better ways to help you.



There are 2 ways you can help us to do better:



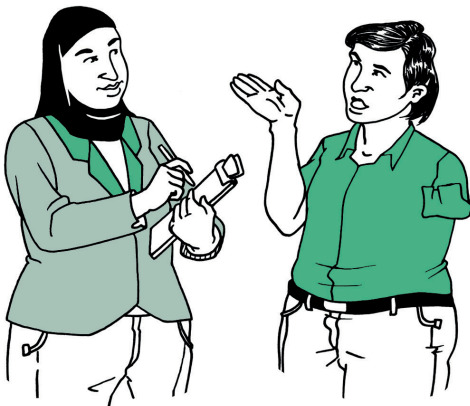
1. Tell us what you like most about The Christie. Please tell us what is important to you.



2. Tell us what needs to be better. This could be about the hospital itself, how we run things, or how the staff can be better.



Please tell us the name of the ward, department or the member of staff you are talking about. This makes it easier to give your feedback to the right people.



We look at all of your comments. All feedback is written down and shared with the person or the department it is about.



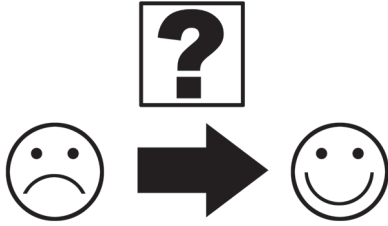
1. What did you really like about The Christie?

A large, empty rectangular box with a dark green border, intended for writing an answer to the question above.



2. What did you not like about your visit?

A large, empty rectangular box with a dark green border, intended for writing an answer to the question above.



3. What can we do to make things better?

A large, empty rectangular box with a dark green border, intended for writing answers to the question above.

When you have completed your form you can either:



- Put it in one of the suggestion boxes.



- You will find the suggestion boxes in waiting areas or corridors around the hospital.



- Post it for free (no stamp is needed) to:

The quality and standards team
The Christie NHS Foundation Trust
FREEPOST
(MR9871)
Manchester
M20 7HH



- You can email your comments to:
the-christie.pals@nhs.net



Please email the-christie.pals@nhs.net if you need this leaflet translating into your language.

The Christie NHS Foundation Trust

Wilmslow Road
Manchester M20 4BX

0161 446 3000

www.christie.nhs.uk

The Christie Patient Information Service
February 2022 - Review February 2025

CHR/GEN/1154/04.05.16 Version 3



This easy read document was made
by CHANGE www.changepeople.org